

AIREBOROUGH VOICE

NEIGHBOURHOOD FORUM AGM



Jennifer Kirkby
Programme Manager

21 September 2016

ANDF Purpose

The purpose of the ANDF is to support the regeneration and sustainable development of the Aireborough Neighbourhood Area.

The aim is to facilitate collaboration between the Area's stakeholders in order to (evaluate, plan and implement initiatives to) improve the (economic, social, cultural and environmental) well-being of the people who live, work or do substantial business in the Aireborough Neighbourhood Area.

WHY A NEIGHBOURHOOD PLAN?

[illegible]

Aireborough's Community Vision

- ▣ To **stimulate identity** in order to **sustain vitality** in this family of **'sibling'** settlements. Together , to grow into a new **modern economy** as a **unique** cornerstone of Leeds City Region and the South Pennines National Area.
- ▣ To resist becoming a suburban dormitory.

Theme	Project
Mutual Landscape Identity Human Powered Accessibility	Green Space & Green Ways Ecology
Sporting & Creative Heritage Civic Community	Community Facilities
Thrive and Grow	Local Economy & Jobs
Beautiful & Distinctive Quarters	Character, Conservation & Design
A Human Lifelong Place	Infrastructure & Housing
Connective not Congested Transport	Traffic and Transport
	Community Engagement

The Process

- @ Community engagement; build membership
 - ☑ Research social, economic and environmental needs and issues themes
 - ☑ Apply for and constitute a Neighbourhood Forum for a designated area
 - ☑ Create a vision for the area
 - ➡ Build an evidence base around themes
 - ➡ Master plan through urban design
 - ▣ Independent examination - conformity NPPF, LDF
 - ▣ Local Referendum
 - ▣ Adoption as part of LDF and carries real weight in planning applications
- (Council duty to support the process and pay for examination and referendum)

WHAT HAVE WE DONE?
2015 / 2016

Aireborough Essence Photography Project Darren Sanderson Photography

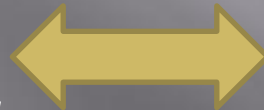


© darren sanderson photography

Site Allocations Evidence Gathering for July 2015

ANDF Sustainability Assessments

- Coppice Wood Group
- Wills Gill Action Group
- Menston & Guiseley Green Belt Protection
- Save Site 4020
- Silverdale Action Group
- Nether Yeadon Conservation Group
- Rawdon Green Belt Action Group
- Harrogate Road Group
- LBA



Masterplan Baseline Report

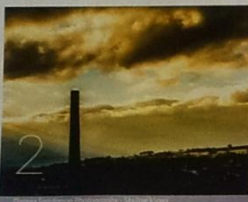
AECOM

3.1 Vision Themes

3.1.1 Mutual Landscape Identity

ISSUE: THREAT TO CHARACTER OF THE AREA IS DEEPLY FELT WITH A FEAR OF BEING A SUBURBAN DOMITORY

- Town meets country - preserve this feel with the right mix of rural and urban
- Strong argument for preserving green fields which remain between Rawdon, Yeadon and Guiseley as our green infrastructure, as few central parks. Fields are what gives character
- Skyline views i.e. hills, notable buildings, and views of green fields in general, under threat
- Historic features not respected



Together the settlements sit on or close to the dip slope of the Chevin, made of local 'gill' stone - used in the foundations of the Houses of Parliament. The glacial topography of the Chevin and Airedale Gap is valued by both locals and people from a much wider catchment area; now there is the prospect of Aireborough being included in the designation of the mooted South Pennines National Park. Aireborough is a cornerstone; on the edge of the South Pennines, Yorkshire Dales and Leeds City Region - corners are important, therefore defining and celebrating 'the flanks of the Chevin', is crucial: by enhancing the attractiveness to residents, so the area will be better able to keep its visitors and help the local economy. The Esbott Wood and Aireborough Greenway area, is also clearly loved, and in need of enhancement for its natural and historic features. Finally, the landscape has given rise to the textile, sporting, entrepreneurial and social history of philanthropy which also underpins the settlements and can be the foundation of renewed civic pride, new resident integration and a visitor economy.

3.1.2 Life Enhancing Sporting and Creative Heritage

Aireborough has nurtured many people in the fields of sport, music and entertainment. The Olympic legacy has been started with the High Royds sports park, and other facilities including Yeadon Tarn, and Aireborough Leisure Centre; but there is much more that could be done, especially as the area is developing into a centre for local youth. It is a strong desire, constantly mentioned, of all local people, to enhance life chances and skills for all young people.

3.1.3 Vital Modern Economy to Grow and Thrive

ISSUE: LOCAL ECONOMY, JOBS AND INDUSTRY ARE NEEDED FOR A VITAL, SUSTAINABLE AREA AND TO TAKE ADVANTAGE OF WASTED OPPORTUNITY

- Lack of required commercial property for growing innovative firms
- Poor quality of facilities in commercial enclaves
- Dying independent high streets and lack of growing visitor facilities

Emphasis on growth of the local economy is based on the local traditions of industry and entrepreneurship, local skill sets, and the intense desire to resist the settlements becoming 'urban dormitories'. The area has a history of innovation; now the Airport's presence lends credence to the dawn of a new era of thought leadership, in creative, design, engineering and micro businesses, with the right facilities. Together with the heritage and landscape qualities of the area, this economic growth focus also supports the strong evidence of a growing visitor economy: to places such as the Airport, Yeadon Tarn, and destination retail shops. All of which needs visitor facilities to feed into a vital local economy.

3.1.4 Beautiful and Distinctive 'Quarters' with Integrity

ISSUE: UNATTRACTIVE URBAN DEVELOPMENTS AND DEVELOPMENT ISSUES ARE REPLACING CHARACTER

- Unattractive features and poor design of new housing
- Condition and quality of materials in public space and sites
- Street and public advertising - there does not seem to be any set and maintained policy; we have advertising on prominent and key buildings that does nothing to enhance the area



Site Allocations Consultation Autumn 2015

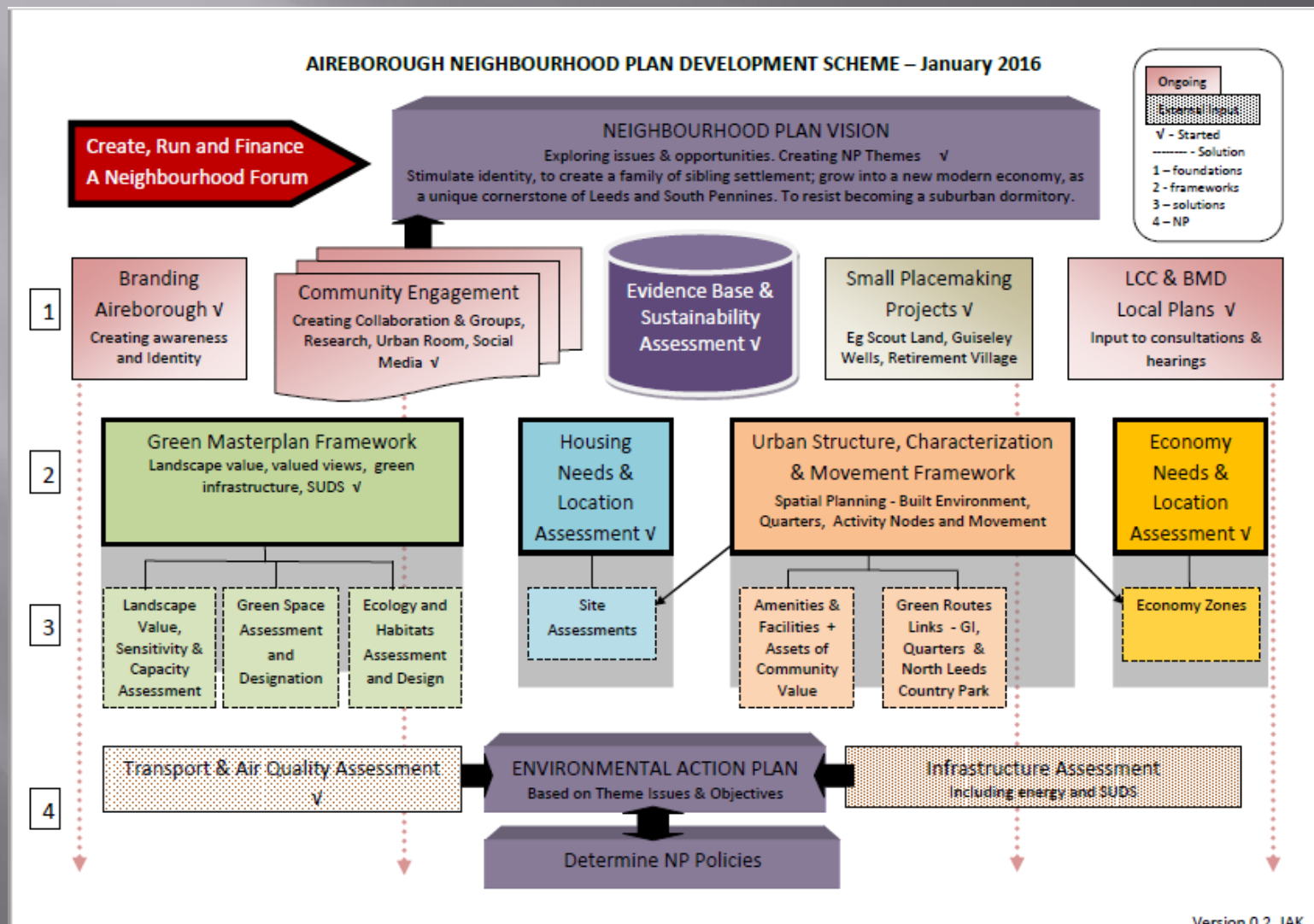


Boxing Day 2015



© darren sanderson photography

Neighbourhood Plan Programme 2016

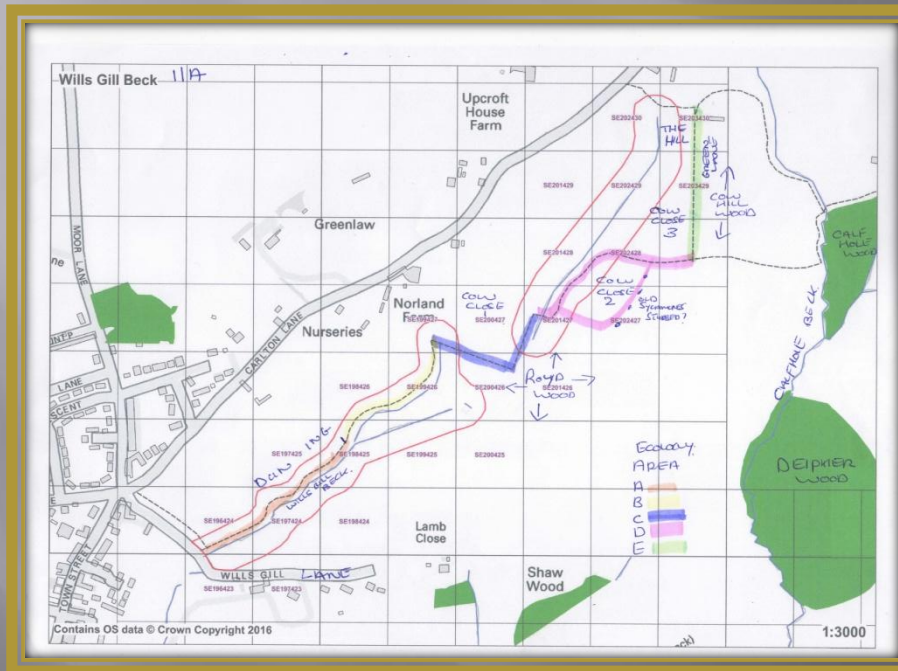


Landscape Value Study



The profile of hills from Hawksworth down to the lower parts of Guiseley at Spring Wood.
Taken from Plan Trees Hill near Leeds Bradford Airport.

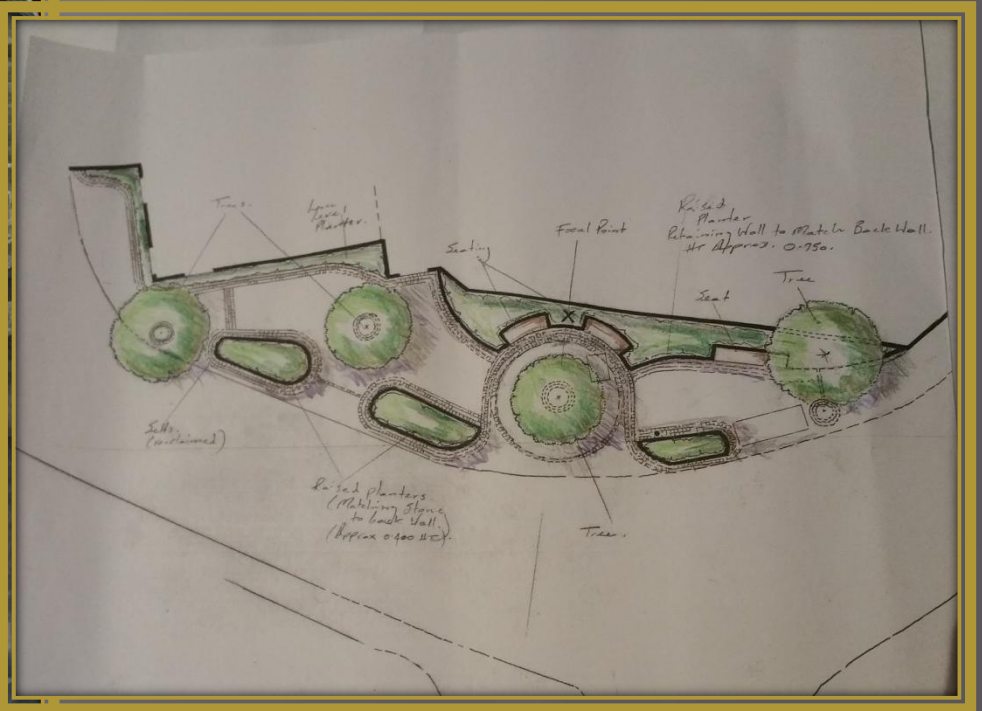
Ecology Study



Housing Needs Study and Newcastle University



Wells Pocket Park



Site Applications



'Route to 2030'

**Strategic Development Plan for Leeds Bradford
Airport**

[Find out more](#)



larren sanderson photography

Community Engagement

Digital & Social Media

•Urban Room



Changes to ANDF Structure

Steering Committee

- Managing the ANDF and making recommendations.
Supported by specialists and Councillors

Neighbourhood Planning Team - Meetings and Workshops

- Contributors involved in the projects and approving direction and key decisions

Membership and Affiliates – Social Media and Workshops and Events

- Who want to help where they can

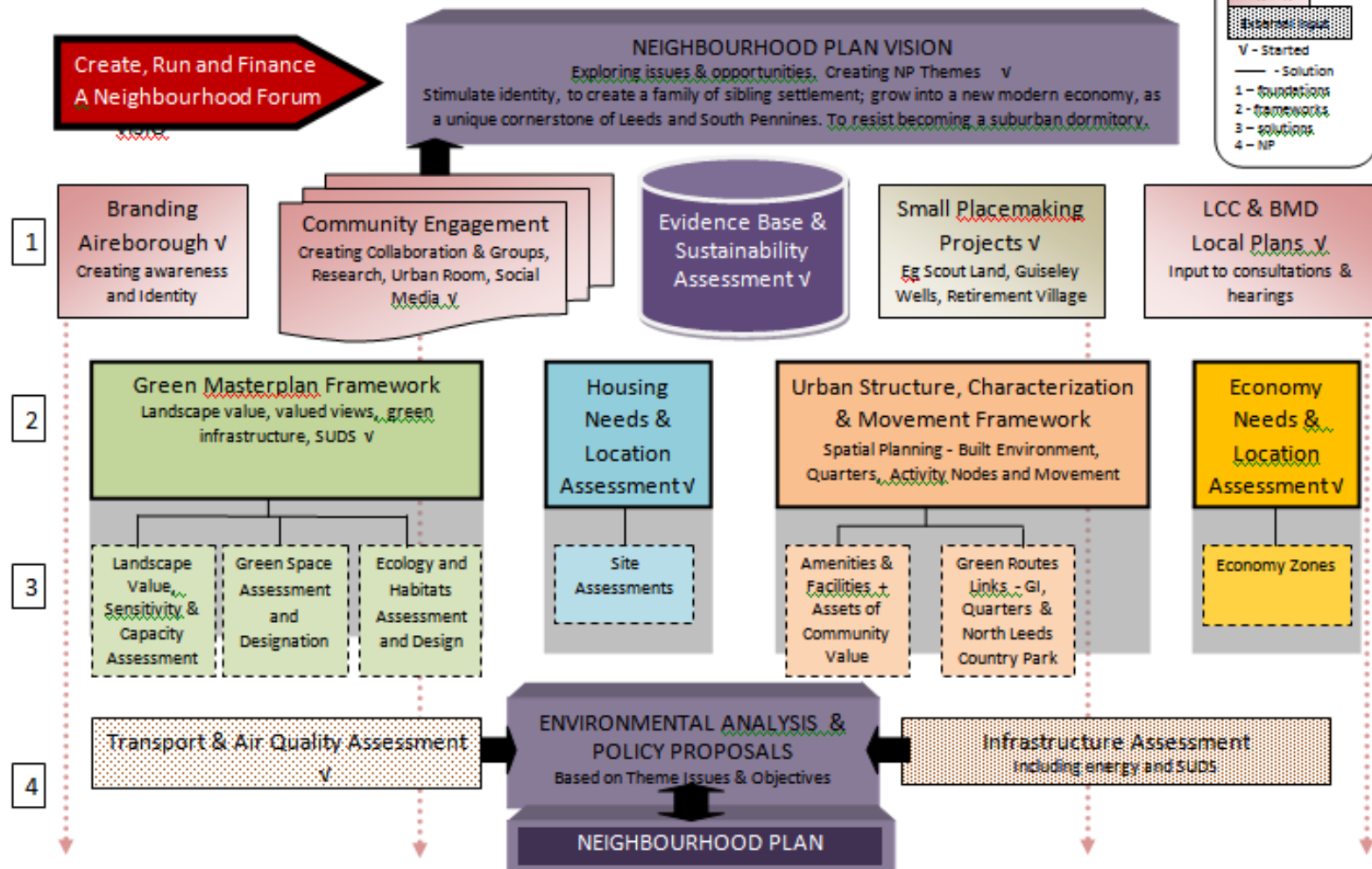
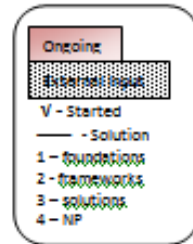
THE FUTURE?

What can we achieve? When?

Do we continue?

Potential Phased Programme Plan

AIREBOROUGH NEIGHBOURHOOD PLAN DEVELOPMENT SCHEME – September 2016



Urban Character Study

- ▣ To establish the different character quarters of Aireborough to help design place and revitalize identity
- ▣ To map movement patterns through Aireborough to encourage modal shift
- ▣ To identify activity notes and establish how they relate to quarters ;to establish need for community facilities and civic amenities
- ▣ To improve the quality of the public realm in line with that for a major settlement

HOUSING SITE IDENTIFICATION

Frank La Corte

AIREBOROUGH

NEIGHBOURHOOD FORUM

